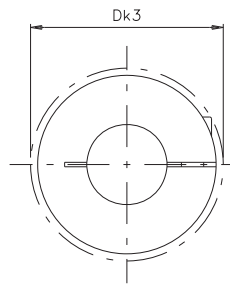
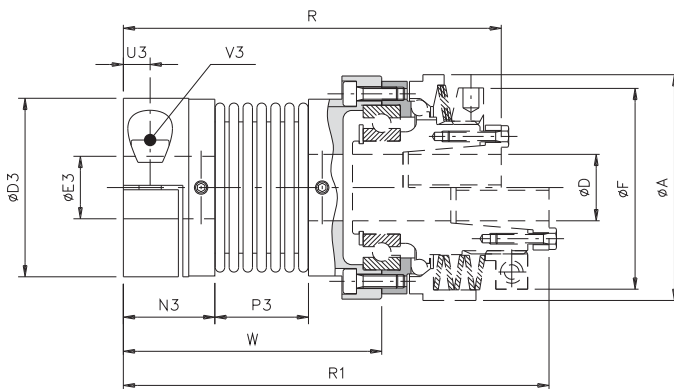


... + GSF (model with bellow coupling): technical data



DIMENSIONS

Size		D3	Dk3	E3 H7		N3	P3	U3	A	F	D max.	R	R1	W
SG	GSF			min.	max.									
00.40	1	34	36	5	16	17	16,5	4,5	44	38	12	72	84	48
00.47	2	40	44	8	20	20,5	21	5,5	50	42	17	87,5	102,5	58
0.63	3	55	58	10	30	22,5	27	6,5	70	62	20	109	125,5	68,5
1.80	4	65	73	14	38	26	32	8	85	75	25	126	144	81
2.96	5	83	89	14	45	31	41	9,5	100	82	35	156	174,5	102

TECHNICAL DETAILS

Size		Torque [Nm]		Weight [kg]	Inertia [kgm ²]	Max. speed [Rpm]	grubscrews	screws V3	Tightening torque		Misalignments			Rigidity		
SG	GSF	Nom	Max						grubscr. [Nm]	screws [Nm]	angular α [°]	axial X [mm]	radial K [mm]	torsional R _t [Nm/rad • 10 ²]	axial R _a [N/mm]	radial R _r [N/mm]
00.40	1	5	10	0,07	0,000024	4000	M3	M4	2,9	0,8	1° 30'	±0,5	0,20	3,050	30	92
00.47	2	15	30	0,14	0,000050	4000	M3	M5	6	0,8	1° 30'	±0,6	0,20	7,000	45	129
0.63	3	35	70	0,29	0,000229	4000	M4	M6	10	2	2°	±0,8	0,25	16,300	69	160
1.80	4	65	130	0,45	0,000622	3000	M4	M8	25	2	2°	±0,8	0,25	33,000	74	227
2.96	5	150	300	0,93	0,000834	2500	M4	M10	49	2	2°	±1,0	0,30	64,100	87	480

TRANSMITTABLE TORQUE WITH CLAMP HUB ASSEMBLY

Size	Transmission torque [Nm] according to the Ø finished bore [mm]																							
	5	6	7	8	9	10	11	12	14	15	16	18	19	20	24	25	28	30	32	35	38	40	42	45
1	5	6	7	8	9	10	11	12	14	15	16													
2				13	14	16	18	19	22	24	25	29	30	32										
3							25	27	32	34	36	41	43	45	54	57	63	68						
4												75	79	83	100	104	116	124	133	145	158			
5														132	158	165	183	198	211	231	248	263	277	295

NOTES

- ⊗ **Technical details:** these details refer only to the application (GSF), for torque limiters details, see on page 26-27
- ⊗ **Technical details:** weights are relevant only to the application pilot bore (GSF); inertias refer only to the application maximum bore (GSF).